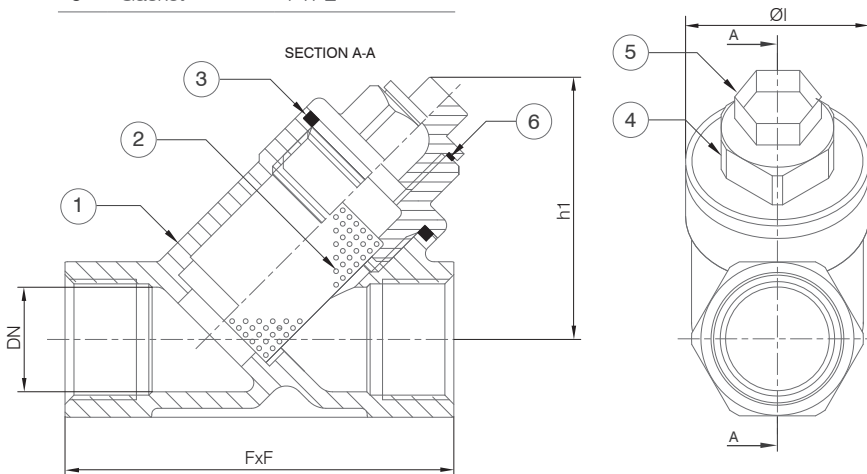
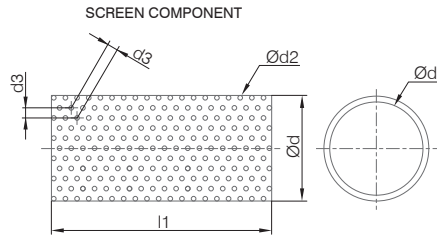


TECHNICAL DATA

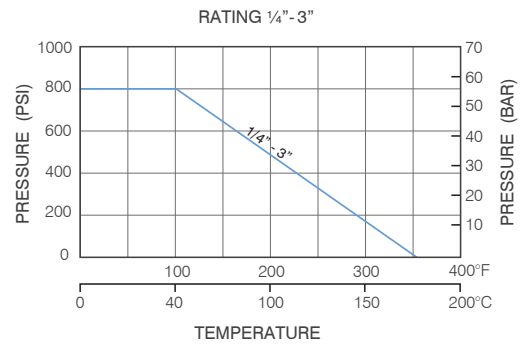
Size Range:	DN8 - DN80 (1/4" - 3")
Pressure Rating:	800PSI
Pressure Test:	API598
Feature:	Investment cast body

MATERIAL SPECIFICATIONS & PARTS LIST

NO.	DESCRIPTION	MATERIAL
1	Body	CF8M
2	Screen	SS316
3	Gasket	PTFE
4	Cap	CF8M
5	Stopper	CF8
6	Gasket	PTFE



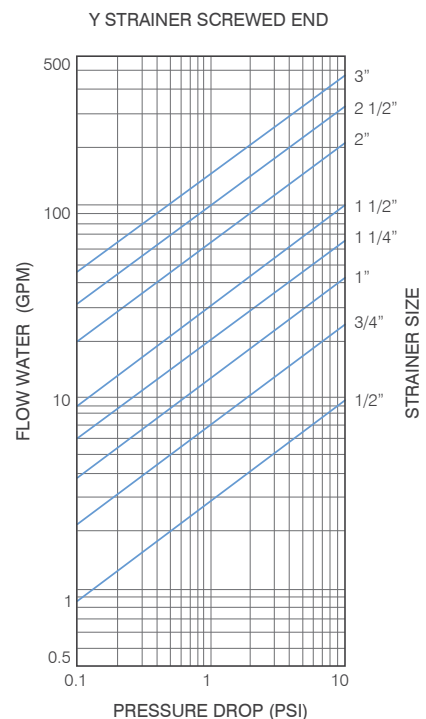
PRESSURE RATINGS



DIMENSIONS (MM)

VT-TF DN15 - DN300											
DN	NPS	FxF	h1	Øl	Ød	Ød1	Ød2	d3	l1	CV Factor	Weight (Kg)
8	1/4"	65	45	31	19.8	18.8	0.6	2	27	1.5	0.26
10	3/8"	65	45	31	19.8	18.8	0.6	2	27	2.7	0.23
15	1/2"	65	45	31	19.8	18.8	0.6	2	27	3.5	0.24
20	3/4"	80	53	36	24.6	23.6	0.6	2	37	4.3	0.36
25	1"	90	68	45	31.5	30.5	0.8	2	46.5	6.5	0.69
32	1 1/4"	105	72	50	37.5	36.5	0.8	2	51.5	10	0.86
40	1 1/2"	120	80	59	45	44	0.8	2	61.5	16	1.35
50	2	140	97	75	57	56	0.8	2	75	18	2.37
65	2 1/2"	170	112	95	69	67	0.8	2	77	49	4.73
80	3"	195	129	111	88	87	0.8	2	97	66	7.26

PRESSURE DROP



FACTORY ACCREDITED:



FIRE SAFETY
APPROVAL AP1607

6D-0645

No. WZ 1093
HH 1

NUMBER
0035

Designs, materials and specifications shown are subject to change without notice due to our continuing program of product development. VT-Y_V1_20120921.

All content is protected by Copyright and is owned and/or licensed by AVFI Pty Ltd. Copyright © AVFI Pty Ltd.