

TECHNICAL DATA

Size Range:	DN15 - DN80 (½" - 3")
Pressure Rating:	600 PSI W.O.G
Features:	<ul style="list-style-type: none"> • PN40 rated • Threaded BSP • Quality investment casting body & cap. • Butt weld & socket weld (optional)

MATERIAL SPECIFICATIONS & PARTS LIST

NO.	DESCRIPTION	MATERIAL
1	Body	CF8M
2	End Cap	CF8M
3	Disc	SS316
4	Body Seal	PTFE
5	Spring	SS316
6	Spring Holder	SS316
7	Washer	SS304
8	Nut	SS304
9	Bolt	SS304

DIMENSIONS (MM)

V3WC DN15 - DN80								
DN	NPS	FxF	Ød	h	h1	l	l1	Weight (Kg)
15	½"	65	14	45.9	30.5	18	27.5	0.36
20	¾"	70	18	50.9	35.2	22	28.5	0.48
25	1"	78	24	56.1	40.8	27.5	30.3	0.63
32	1 ¼"	96	30	67.4	49.9	32	38.5	1.09
40	1 ½"	102	36	75.4	58.2	37	39	1.53
50	2"	118	48	88	70	47	43	2.32
65	2 ½"	145	63	113	90.5	47	56.5	4.41
80	3"	156	76	130.8	106.8	55	59.5	6.88

Other sizes available on request.

FACTORY ACCREDITED:

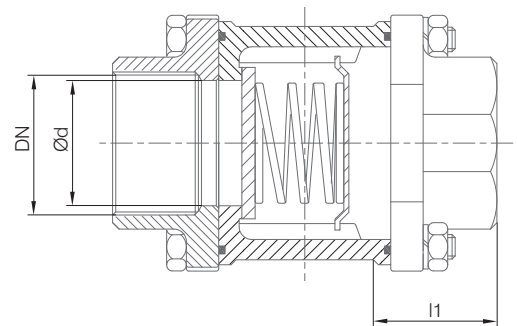
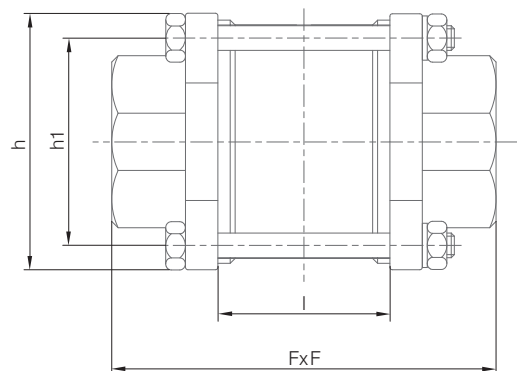
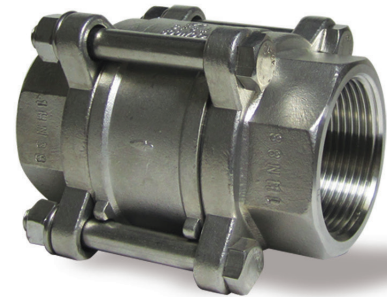


FIRE SAFETY
APPROVAL AP1607

6D-0645

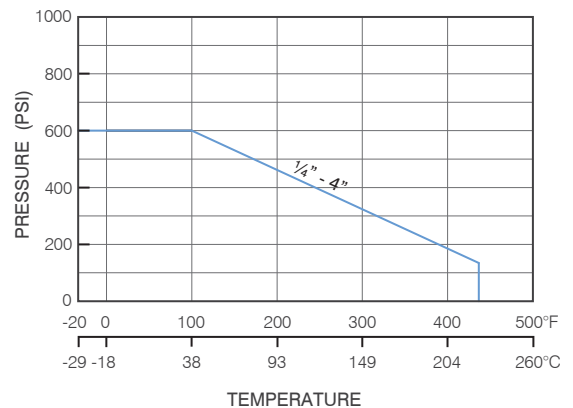
No. WZ 1093
HH 1

NUMBER
0035



PRESSURE RATINGS

CLASS 150 RATING
DN8-DN100 (¼"-4")



Designs, materials and specifications shown are subject to change without notice due to our continuing program of product development. V3WC_V1_20130722.

All content is protected by Copyright and is owned and/or licensed by AVFI Pty Ltd. Copyright© AVFI Pty Ltd.