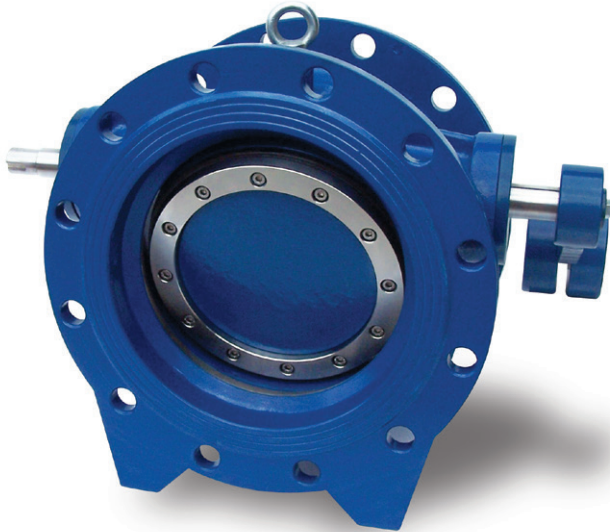


4000 SERIES

DOUBLE FLANGED
TILTING DISC CHECK VALVE



MODEL 4010



MODEL 4020

APPROVED

✓ AS4020

ACCORDING TO

✓ AS4794

FEATURES

- 316L weld deposited seat is micro finished for low torque and long life.
- AS4020 approved epoxy coating offering high corrosion resistance.
- Low head loss due to disc design.
- Model 4010 double eccentricity results in unstressed disc seal ring when valve is in the open position.
- Model 4020 has 25% less disc travel so fast response time, reducing water hammer.
- Model 4020 suitable for buried services, no external weight needed.
- Special replaceable disc seal profile for low torque and maintenance.

OPTIONS

- External hydraulic dampener on model 4010.
- Internal hydraulic dampener on model 4020, allowing slow closure to last 10%.
- Limit Switches.
- Special seawater construction.

TECHNICAL DATA

Size Range:	DN 150 - DN 3000
Pressure Classes:	PN16, PN 25, PN 40
Face to face:	ISO 5752/ EN 558-1 Series 14
Temperature Range:	-15 °C to +80 °C
Flange Connection:	AS4087 Class 16, 21 & 35 (Standard) AS2129, ANSI B16.5, AWWAC207 (Optional)
Leakage Tests:	AS4794 & EN 12266-1-Zero leakage API 598 Tables.
Coating:	AS4020 approved epoxy coating internally and externally.
Certification:	AS4794 Material and test certificates, available upon request.

FACTORY ACCREDITED:



ISO 90001:2000



NUMBER 0062



GAS APPROVAL



II 2 GD 11B
T6, T3



97/23/EC APPROVAL
FOR USE ON AIR,
STEAM & OIL



NR 216 & IBC CODES
FOR OFFSHORE
SHIPPING

4000 SERIES

DOUBLE FLANGED
TILTING DISC CHECK VALVE



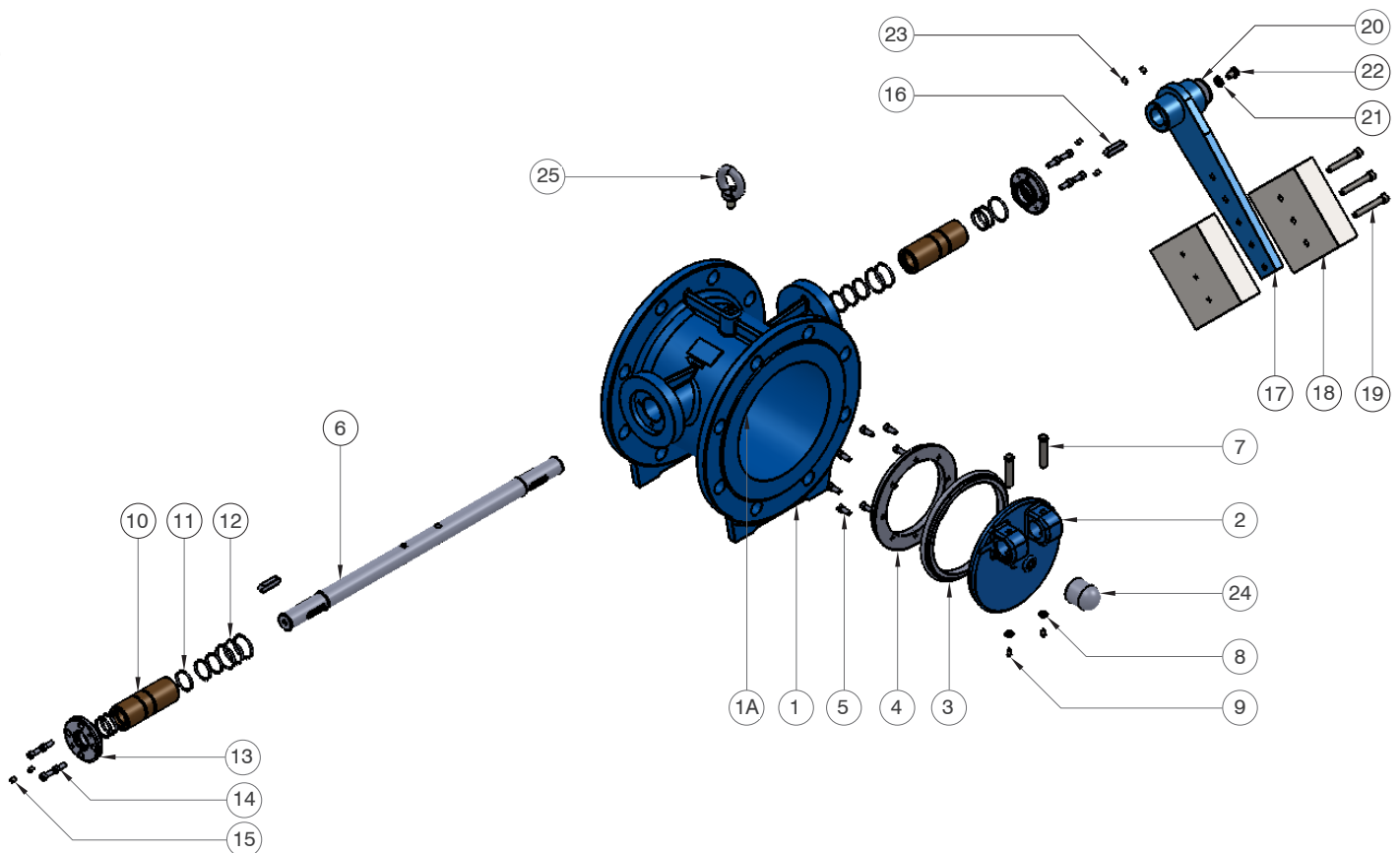
MATERIAL SPECIFICATIONS & PARTS LIST

MODEL 4010 SOFT SEATED CHECK VALVE

NO.	DESCRIPTION	MATERIAL
1	Body	GGG40-50
1A	Body Seat	Stainless steel with welding
2	Disc	GGG40-50
3	Disc Seat	EPDM
4	Retaining Ring	AISI 316
5	Bolt	A4
6	Shaft	1.4057
7	Pin	1.4057
8	Washer	A4
9	Bolt	A4
10	Front/ Back Bushing	Bronze
11	O-Ring	EPDM
12	O-Ring	EPDM

NO.	DESCRIPTION	MATERIAL
13	Front/ Back Cover	GGG40
14	Bolt	A4
15	Setscrew	A4
16	Key	C45 K
17	Weight Lever	St 37
18	Weight	St 37
19	Bolt	A4
20	Washer	C1050
21	Washer	A4
22	Bolt	A4
23	Setscrew	A4
24	Stopper	Vulkalon
25	Eye Bolt	A105

page 2



Designs, materials and specifications shown are subject to change without notice due to our continuing program of product development. 4000 Series_V1_20131106.

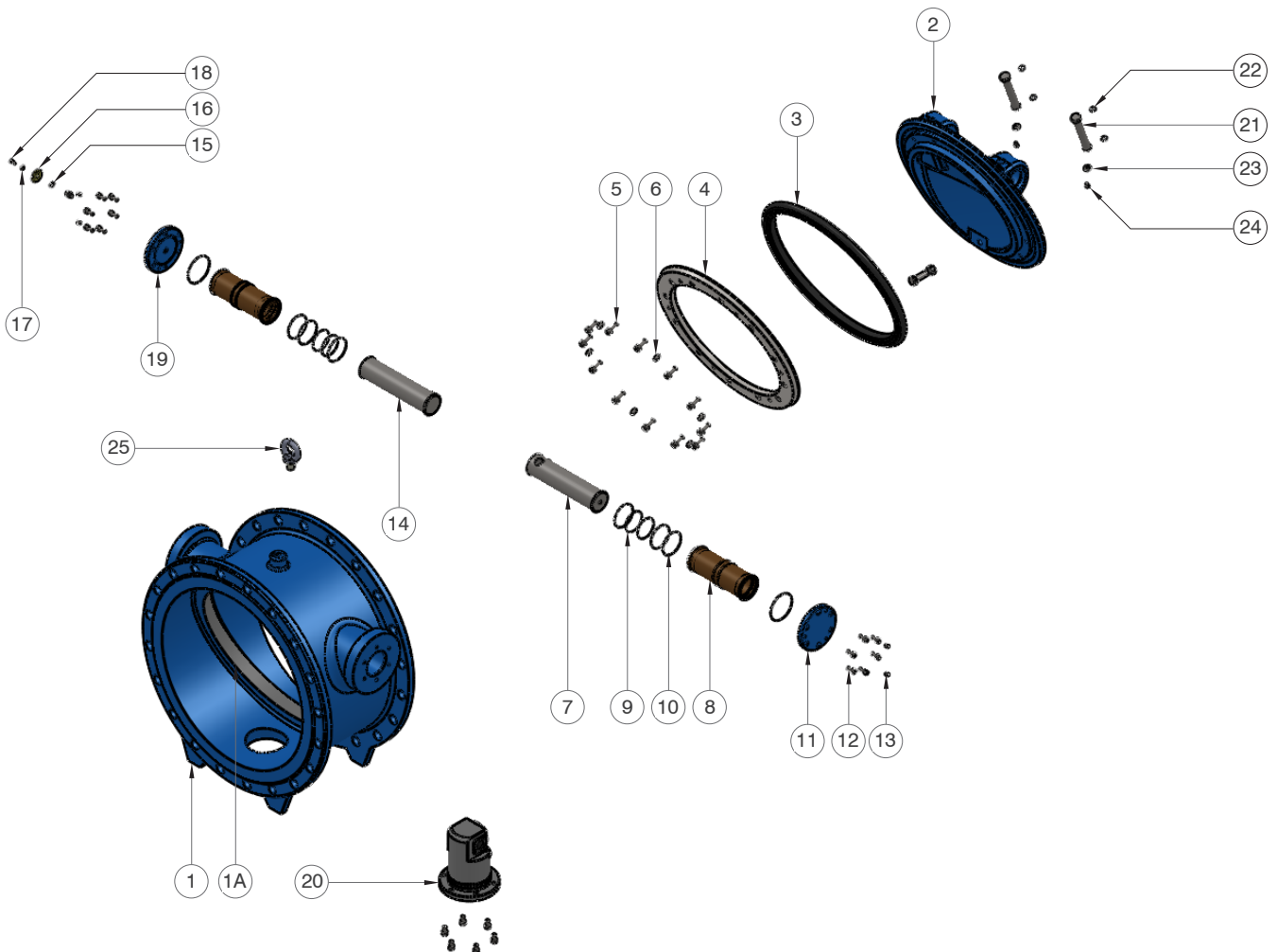
All content is protected by Copyright and is owned and/or licensed by AVFI Pty Ltd. Copyright© AVFI Pty Ltd.

MATERIAL SPECIFICATIONS & PARTS LIST

MODEL 4020 SLANTED SEAT CHECK VALVE

NO.	DESCRIPTION	MATERIAL
1	Body	GGG40-50
1A	Body Seat	Stainless steel with welding
2	Disc	GGG40-50
3	Disc Seat	EPDM
4	Retaining Ring	AISI 316
5	Bolt	A4
6	Setscrew	A4
7	Back Shaft	1.4057
8	Front/ Back Washer	Bronze
9	O-Ring	EPDM
10	O-Ring	EPDM
11	Back Cover	GGG40
12	Bolt	A4

NO.	DESCRIPTION	MATERIAL
13	Setscrew	A4
14	Front Shaft	1.4057
15	O-Ring	EPDM
16	Position Indicator	St-37
17	Washer	A4
18	Bolt	A4
19	Front Cover	GGG40
20	Internal Damper (optional)	1.4021
21	Pin	1.4057
22	O-Ring	EPDM
23	Washer	A4
24	Bolt	A4
25	Eye Bolt	A105



4000 SERIES

DOUBLE FLANGED TILTING DISC CHECK VALVE

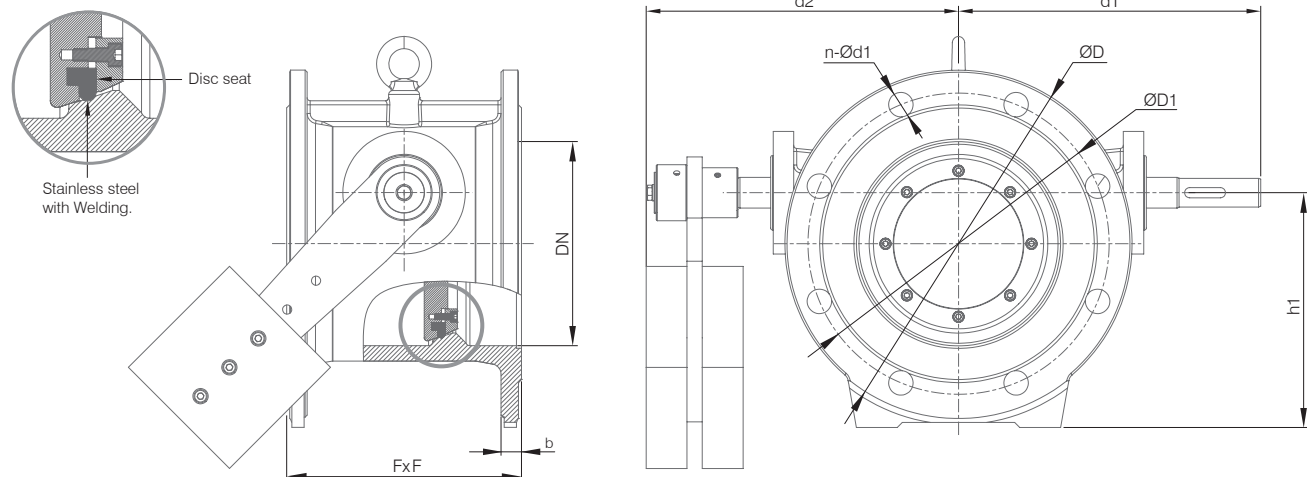


DIMENSIONS (MM)

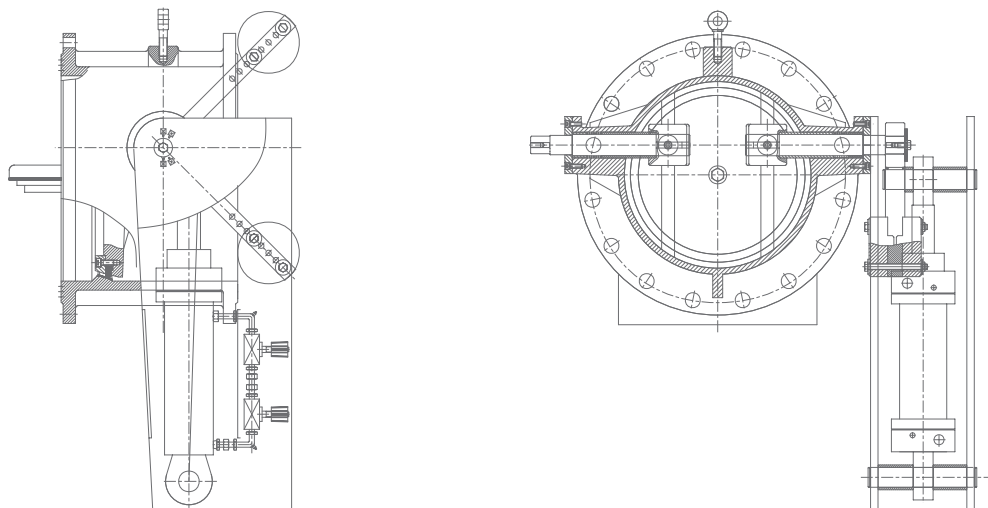
MODEL 4010 & 4020 CHECK VALVE							AS4087 CL16		KV Headloss	
DN	FxF	b	h1	d	d1	d2	ØD	ØD1	n-Ød1	Model 4010 (Fully Open)
150	210	23	158	—	195	200	280	235	8-18	571
200	230	23	190	324	220	230	335	292	8-18	1030
250	250	24	220	388	285	290	405	356	8-22	1706
300	270	30	250	420	314	340	455	406	12-22	2362
350	290	33	280	490	345	370	525	470	12-26	3180
400	310	33	302	578	374	430	580	521	12-26	4404
450	330	33	330	624	422	450	640	584	12-26	5314
500	350	35	380	677	456	515	705	641	16-26	6561
600	390	42	458	828	550	590	825	756	16-30	8934
700	430	45	460	890	580	660	910	845	20-30	11288
800	470	48	525	920	685	715	1060	984	20-36	15635
900	510	52	570	1200	725	750	1175	1092	24-36	19446
1000	550	56	650	1320	795	825	1255	1175	24-36	26934

DIMENSIONAL DRAWINGS

MODEL 4010 (STANDARD)



MODEL 4010 WITH HYDRAULIC DAMPENER (OPTIONAL)

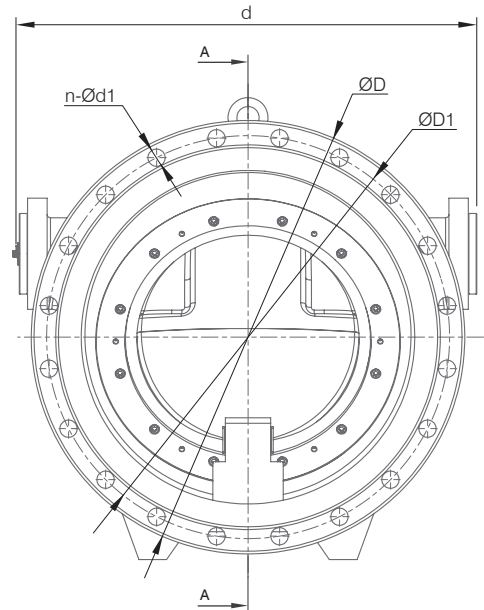
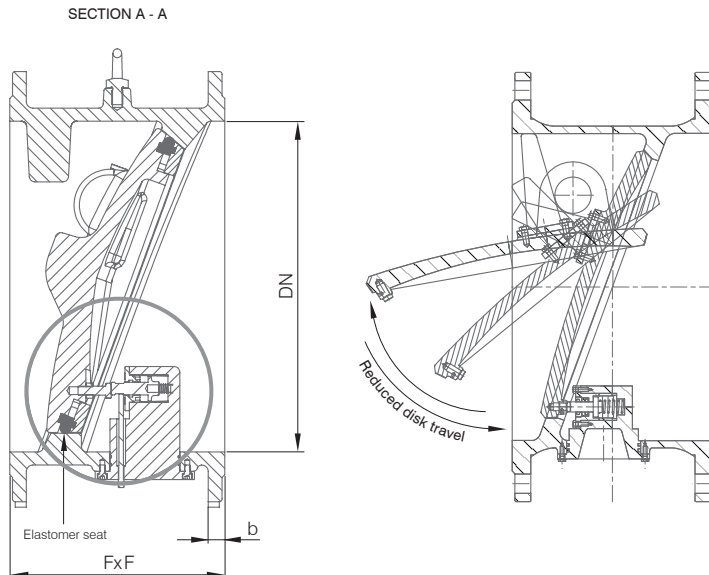


Designs, materials and specifications shown are subject to change without notice due to our continuing program of product development. 4000 Series_V1_20131106.

All content is protected by Copyright and is owned and/or licensed by AVFI Pty Ltd. Copyright© AVFI Pty Ltd.

DIMENSIONAL DRAWINGS

MODEL 4020 (STANDARD)



MODEL 4020 CLOSING CHARACTERISTICS

