

## TECHNICAL DATA

Size Range:	DN50 - DN600 (2" - 24")
Max. Pressure Rating for metal seat:	ANSI150 (19 Bar) ANSI300 (49.6 Bar)
Working Temperature:	-20°C to 200°C
To suit drilling pattern:	ANSI150, ANSI300, AS4087 CL16 & AS4087 CL35.
Features:	<ul style="list-style-type: none"> <li>• PN16, PN25 &amp; PN40 rated.</li> <li>• Optional materials available in WCB, SS304 &amp; Duplex.</li> <li>• Multiple springs for quicker activation and longer life.</li> </ul>

## MATERIAL SPECIFICATIONS & PARTS LIST

NO.	DESCRIPTION	MATERIAL
1	Body	CF8M
2	Plate	CF8M
3	Spring	SS316
4	Hinge Pin	SS316
5	Stop Pin	SS316
6	Retainer	SS316
7	Body Bearing	SS316
8	Plate Bearing	SS316
9	Seat	Metal (standard) NBR, EPDM, VITON (optional)
10	Eye Bolt	SS400

## DIMENSIONS (MM)

V-MP05 DN50 - DN600			ANSI150	ANSI300	AS4087 CL16			
DN	NPS	ØD1	FxF	ØD	FxF	ØD	FxF	ØD
50	2"	60	60	105	60	111	43	98
65	2 1/2"	73	67	124	67	130	46	110
80	3"	89	73	137	73	149	64	128
100	4"	114	73	175	73	181	64	156
125	5"	141	86	197	86	216	70	187
150	6"	168	98	222	98	251	76	213
200	8"	219	127	279	127	308	89	267
250	10"	274	146	340	146	362	114	328
300	12"	324	181	410	181	422	114	375
350	14"	356	184	451	222	486	127	448
400	16"	406	191	514	232	540	140	498
450	18"	457	203	549	264	597	152	562
500	20"	508	219	606	292	654	152	619
600	24"	610	222	718	318	775	178	727

## FACTORY ACCREDITED:



FIRE SAFETY  
APPROVAL AP1607

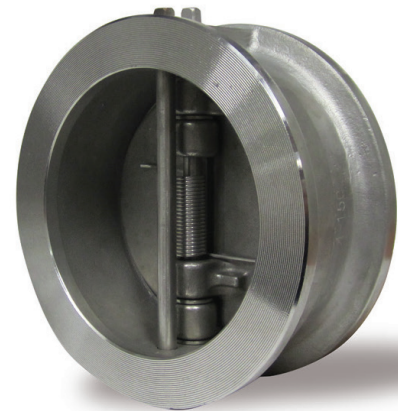
6D-0645

No. WZ 1093  
HH 1

NUMBER  
0035

Designs, materials and specifications shown are subject to change without notice due to our continuing program of product development. V-MP05\_V1\_20131017.

All content is protected by Copyright and is owned and/or licensed by AVFI Pty Ltd. Copyright © AVFI Pty Ltd.



## DIMENSIONAL DRAWINGS

### SECTION A - A

